



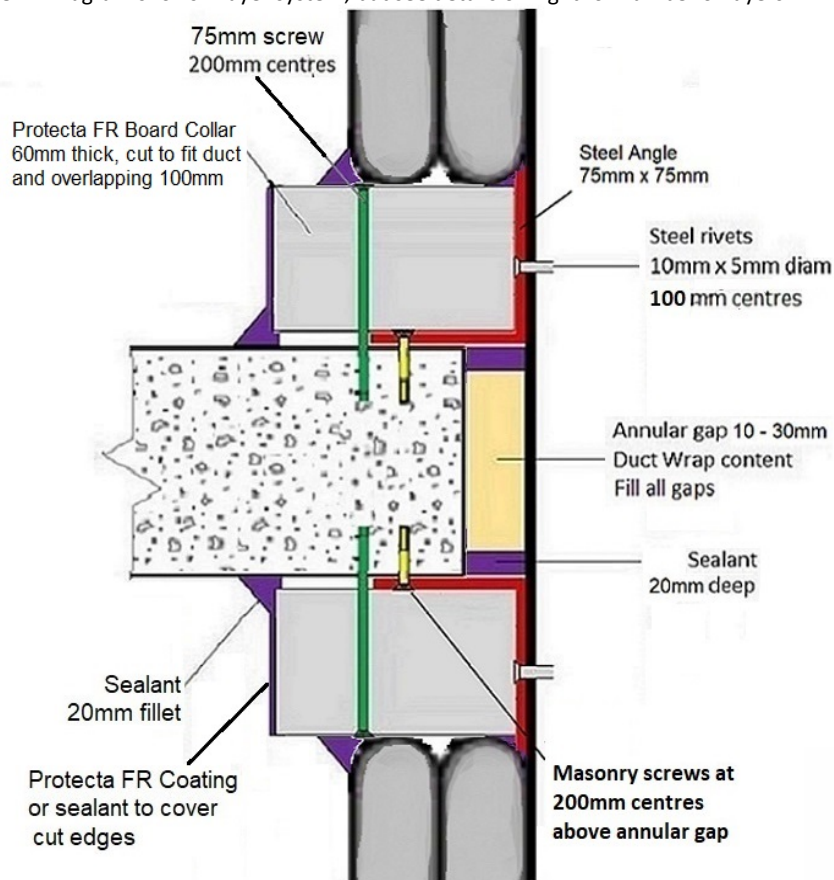
FIRESTOP CENTRE

Authorised New Zealand Distributor
Ph (09) 483 4000 www.firestopcentre.co.nz

INSTALLATION INSTRUCTIONS

1. Aperture to be core-drilled with annular gap no greater than 30mm.
2. Sealant for this system may be either Protecta FR Acrylic or FIRESTOP Ultra
3. Place unfoiled Firestop Duct Wrap material compressed nominally 30% into the annular gap leaving a 20mm recess top and bottom. Ensure any gaps in corners, etc are filled to the required compression.
4. Fill the recess with 20mm deep sealant top and bottom of the floor and apply a bead of sealant to the duct before attaching the angle.
5. Attach 0.8mm thick slotted steel angle 75mm x 75mm bent around the duct on top and bottom of the floor.
Fix to the duct with steel rivets 10mm x 5mm diam at 100mm centres.
Fix to the floor with masonry screws (min 32mm) at max 200mm centres with a fixing 50mm or less at end of each angle section.
6. Construct a collar from Protecta FR Board (60mm 2-sided) curved to fit the duct and overlapping the floor by a minimum 100mm on all sides. Fix to the floor with min 8g x 75mm screws with penny washers at 200mm centres and max 50mm from each edge.
7. Use sealant to fill any gaps in the collar. Then apply a 20mm fillet at the floor/collar joint and the duct/collar/angle joint. Finally cover the exposed cut edges of the collar with sealant or Protecta FR Coating.
8. Install the Firestop Duct Wrap layers as specified and seal the wrap/collar junction with a sealant fillet.

NOTE: Diagram shows 2 layer system, but see details on right for number of layers



FIRESTOP Duct Wrap-38 Circular Duct (up to 1000mm diam) in a core-drilled aperture Concrete Floor (100mm thick or greater) Internal or External Fire

FireTS Lab

Report FTSL AR23108, Pages 15-18, 25-29
AS1530.4-2014 AS4072.1-2005

System ID# FC716

Products	FIRESTOP Duct Wrap-38 Protecta FR Board Sealant (FR Acrylic or Ultra)
Application	Fire stopping of circular duct penetrating a concrete floor
Construction	Concrete floor min 100mm thick

Fire Classification

NOTE: For general instructions on installing
FIRESTOP Duct Wrap-38 see [Installation
Instructions](#) sheet on Firestop Centre website.

FRR 60/60/-
Below floor single layer wrap
Above floor single layer wrap

FRR 60/60/30
Below floor single layer wrap
Above floor single layer with 1600mm second
layer

FRR 120/120/90
Below floor double layer wrap
Above floor single layer wrap with 2100mm
second layer

Where FRR of the floor is less than the above
ratings, the FRR of the penetration is reduced
to match the floor.



FIRESTOP

Firestop Centre Ltd
657 Great South Road
Penrose, AUCKLAND

Sheet size: A4	Drawn date & no: 20/5/24
--------------------------	-----------------------------

As a part of our policy of on-going product development and testing, we reserve the right to modify, alter or change product specifications without giving notice. All information contained in this document is given in good faith and is provided for guidance only. Any drawings provided are for illustrative purposes only. As Firestop Centre has no control over the methods or competence of installation and of prevailing site conditions, no warranties, expressed or implied are intended to be given as to the actual performance of the product mentioned or referred to herein and no liability whatsoever will be accepted for any loss, damage or injury arising from the use of the information given.

For all technical details on the products specified
please refer to the technical data sheets that can
be found on www.firestopcentre.co.nz

Signed and approved: